

**PROGRAMME D'ANALYSE DES TROUPEAUX DE BOUCHERIE DU QUÉBEC**

R3.03

**ANNUAL INFORMATION ON MANAGEMENT AND PRODUCTIVITY FOR THE HERD**

Page 2 of 7

2021.08.10 17:22

Name / Advisor :

<b>No :</b>	<b>Exploitation no :</b>	<b>Herd no :</b>
<b>Farm / Name :</b>		<b>Name / Prod. :</b>
<b>Address :</b>		
<b>Province :</b>	<b>Postal code :</b>	
<b>E-Mail :</b>		
<b>Phone :</b>		<b>Fax number :</b>

Variable	From 2019.11.01 to 2020.10.31	From 2018.11.01 to 2019.10.31	Variation Column 1 - Column 2	Crop average 2019 (1)		
				Area	Province	1st quartile (2) Province
1. Average number of females from 24 months of age and more in inventory or having already calved	193.7	187.0	6.7	70.2	90.5	81.7
2. Total number of calving during the period	204	199	5	70	84	83
3. Number of calvings that contributed to the calving interval	180	180	0	57	68	70
4. Average calving interval (days)	366	366	0	369	371	367
5. Number of calvings that contributed to the age at first calving	24	17	7	9	13	11
6. Average age of heifers at first calving (year/month)	2/1	1/11	0/2	2/0	2/0	2/1
7. Average age of females at calving (year/month)	6/6	5/11	0/7	6/2	6/2	6/2
8. Difficult calving rate (%)	0.5	0.5	0.0	4.4	3.9	3.6
9. Total number of calves born or entered before weaning minus the sales before weaning	204	195	9	71	88	86
10. Percentage of female within calves born (%)	50.5	48.2	2.3	50.5	49.5	49.1
11. Calves from artificial insemination rate (%)	0,0	0,0	0,0	17.9	24.1	26.2
12. Abortion rate (%)	1.0	0.5	0.5	1.9	1.8	1.5
13. Mortality rate of calves in preweaning (%)	3,9	3.1	0.8	7.4	7.7	6.3
14. Number of calves weighed at birth	194	183	11	73	88	87
15. Actual average weight at birth (pound)	93.0	92.4	0.6	89.7	89.7	90.2
16. Number of calves weighed at weaning	187	188	-1	60.1	76.0	79.8
17. Average age of calves at weaning (days)	230	224	6	251	239	251
18. Actual average weight at weaning (pound)	685.7	694.2	-8.5	683.4	663.8	731.9
19. Actual ADG in preweaning (pound/d)	2.574	2.693	-0.119	2.385	2.414	2.571
20. Reproductive efficiency rate (number of weaning calves/number of females in inventory)(%)(3)	96.5	100.5	-4.0	85.5	84.0	97.7
21. Number of cow-calf pairs that contributed to the ratio calculations	0	0	0	3	8	9
22. Actual average ratio of calf weight at weaning to cow weight (%)	0.0	0.0	0.0	46.7	45.7	47.7
23. Number of calves with a sale price	140	162	-22	53	48	52
24. Average dollars per calf sold at 12 months of age and less (\$/head)(4)	1 435	1 409	26	1 335	1 356	1 431

(1) The regional and provincial averages have been established for the period from 2018.11.01 to 2019.10.31 (2) Enterprises selected according to their calving interval, weight and reproductive efficiency rate.

(3) The number of weaned calves also includes those who does not have a weaning weight. (4) The regional, provincial and the first quartile sale price averages excludes the animals destined for reproduction where the value is more than \$ 1900.

Note : Everywhere where it's applicable, the calf birth date must be complete to be part of the calculation. Over a period of 12 months, a cow can have 2 calving that contribute to different averages

No :

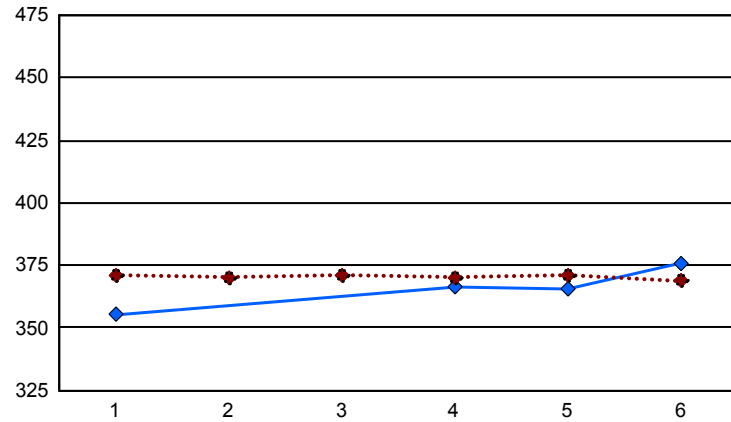
Exploitation no :

Herd no :

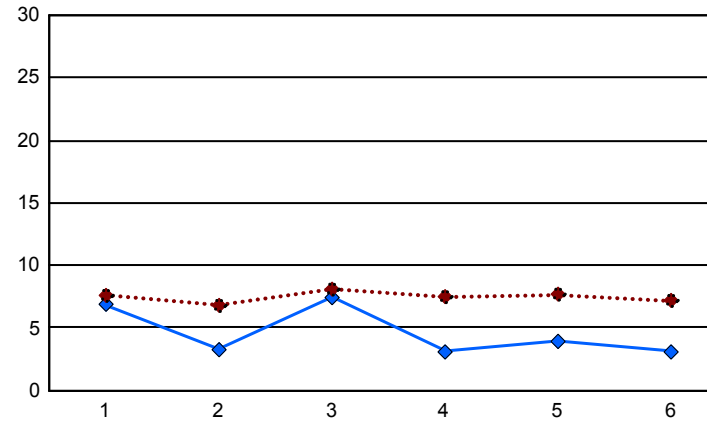
Référence : provincial averages

First cycle<sup>1</sup> : 2020 First date<sup>2</sup> : 2020.11.01

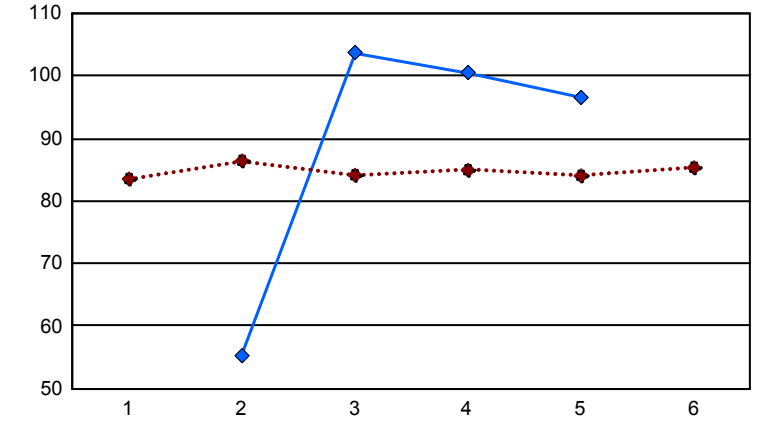
Average calving interval (days)



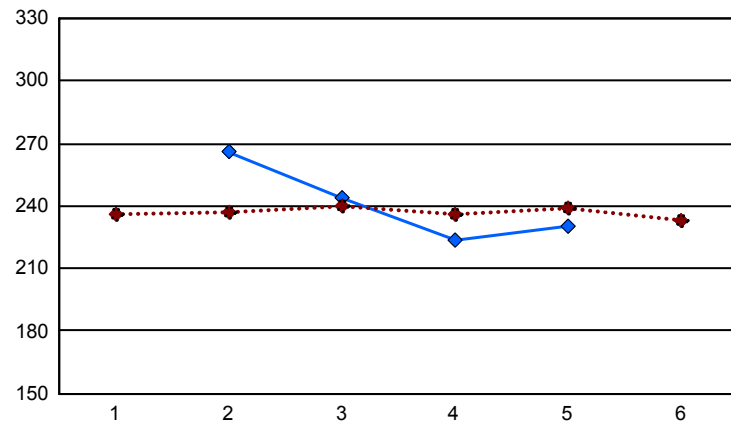
Death loss of calves in preweaning (%)



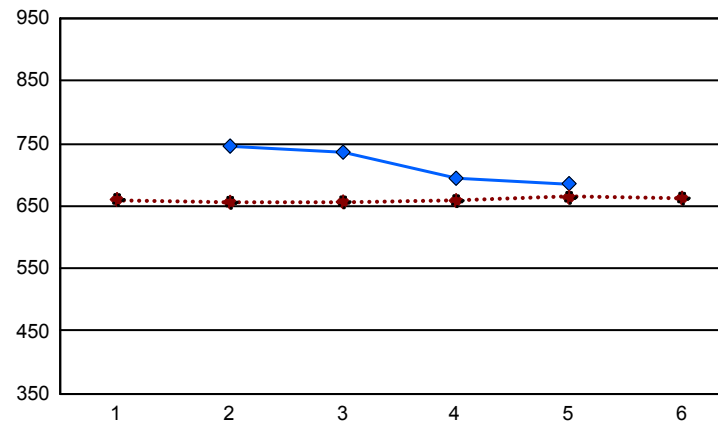
Productive efficiency rate (%)



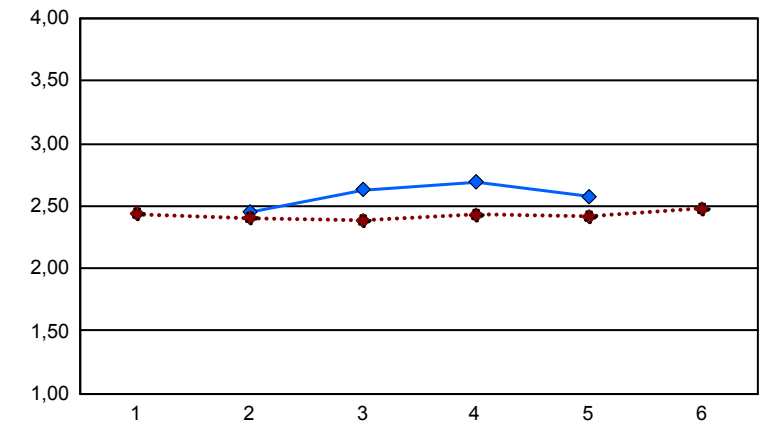
Average age of calves at weaning (days)



Actual average weight at weaning (lb)





Actual ADG in preweaning (lb/day)



1 : The cycle for the provincial average is November 1 to October 31

2 : The first date corresponds to the most recent year, which is at the right of the figures

 Solid blue line = farm data  
 Dotted red line = provincial averages